

# PC Programmer



## 1 PACKAGE CONTENTS

- n.1 Programmer
- n.1 Type "A" connection cable
- n.1 Type "B" connection cable
- n.1 Type "C" connection cable

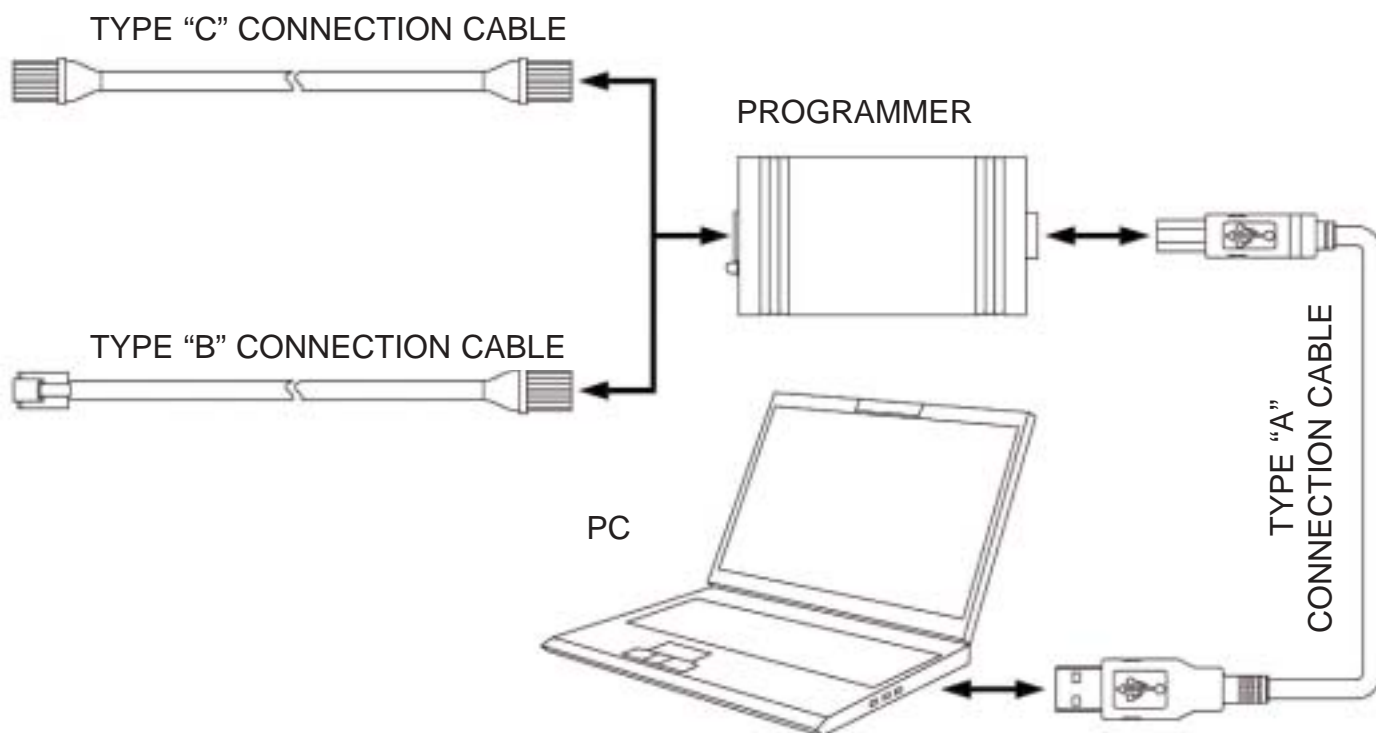


Fig.1

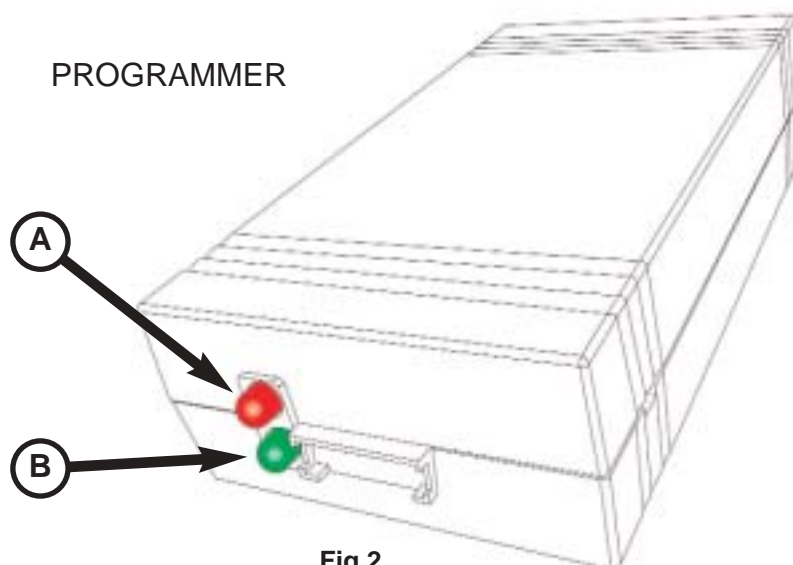


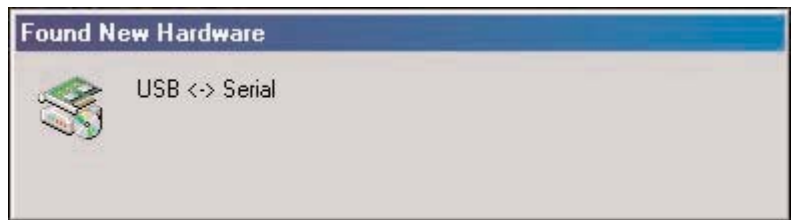
Fig.2

## 2 DRIVER INSTALLATION

Turn on the PC and connect the type "A" cable to the programmer and the PC.

If the operating system does not already have the device drivers installed, a window will appear as shown in Fig. 3. Proceed as follows:

**Fig.3**



**1 - Fig.4**

Windows automatically performs the device driver search process. Click on Next when the first screen appears.



**Fig.4**



**2 - Fig.5**

Choose Search for Available Device Drivers and click on Next.

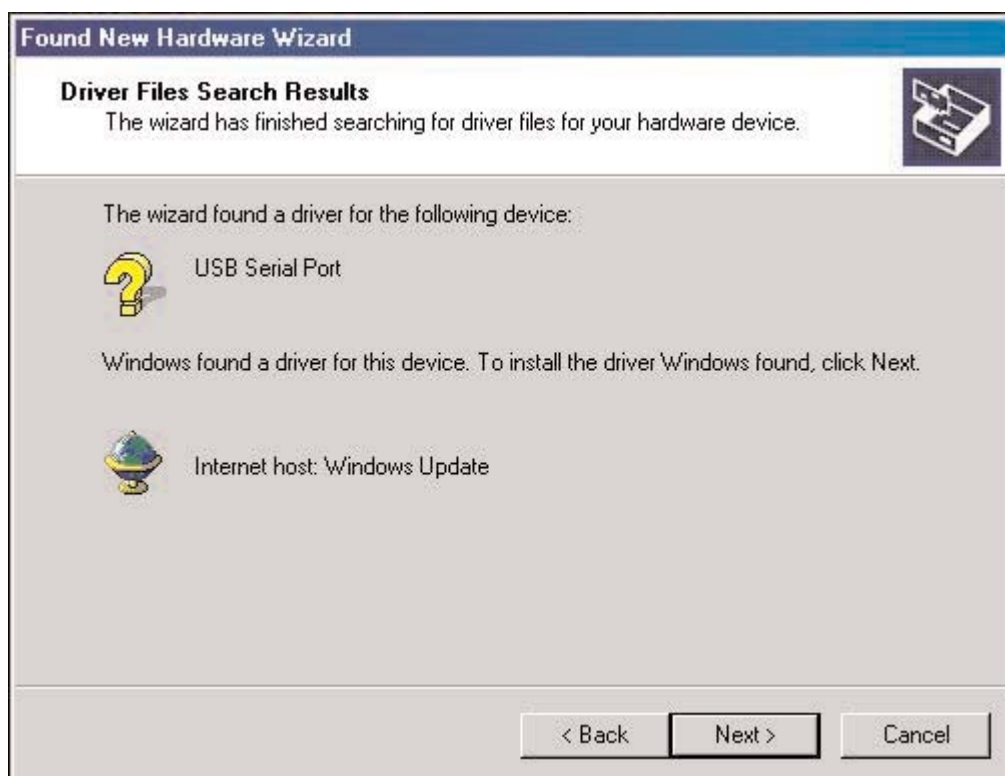
**Fig.5**

### 3 - Fig.6

Choose Search the Web (Microsoft Windows Update) and click on Next.



Fig.6



### 4 - Fig.7

Windows has successfully installed the drivers. Click on Next and exit from the installation. The programmer can now be used properly.

Fig.7

If the automatic driver search process was not successful or if the operating system is not Microsoft Windows, the drivers can be downloaded from the [www.ftdichip.com](http://www.ftdichip.com) website and the installation performed manually.

### 3 SOFTWARE MOVHE *MovheSoft* INSTALLATION

- Download the software from the [www.movhe.com](http://www.movhe.com) website.
- Install the software by running the Setup.exe program and following the instructions on the screen.

### 3 SOFTWARE SESAMO *MilleniumWare* INSTALLATION

- Download the software from the [www.sesamo.eu](http://www.sesamo.eu) website.
- Install the software by running the Setup.exe program and following the instructions on the screen.

**If software is version 2.04, password will be: MWare2\_04**

### 4 DIAGNOSTICS

Note the following when quickly checking whether the devices and the PC are connected:

- If the green LED remains lit (Fig.2 - Part.B), the devices are correctly connected to the PC.
- If the red LED is flashing (Fig.2 - Part.A), data is being transmitted.

