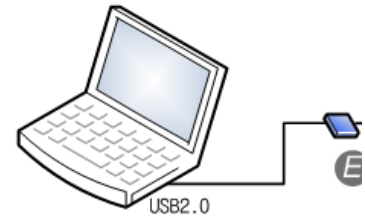


3.2. Install the USB to RS485 converter hardware driver

This is very important step, must be careful to make sure the converter has been installed correctly.

Please note, in this step, you don't need to connect with the Door Station, use converter alone.



3.2.1. Connect the USB to RS485 converter to your PC USB

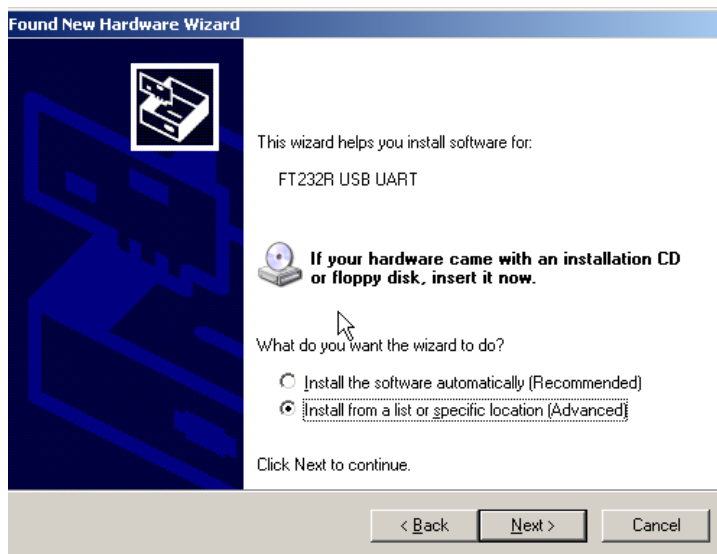
port. Wait 5 seconds or more, Windows system will show that a new hardware is found.



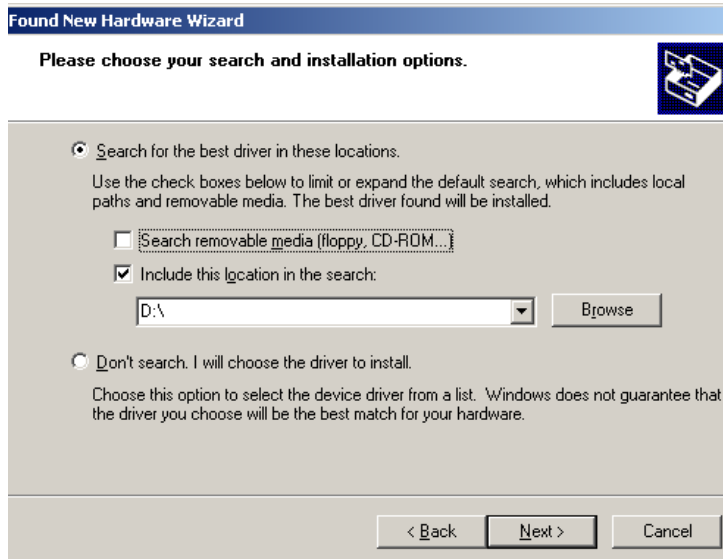
3.2.2. Select the last item 'No , not this time', then click Next button.



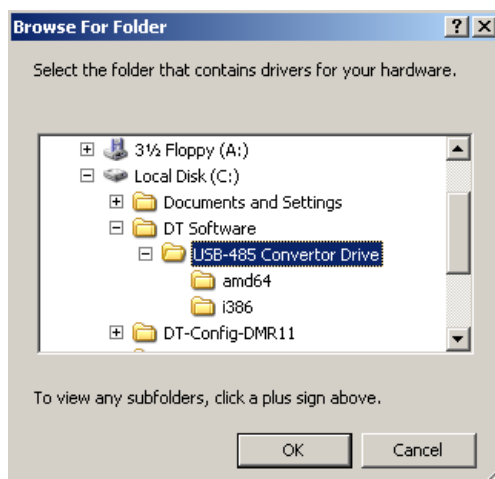
3.2.3. Select 'Install from a list or specific location (Advanced)', then click Next button



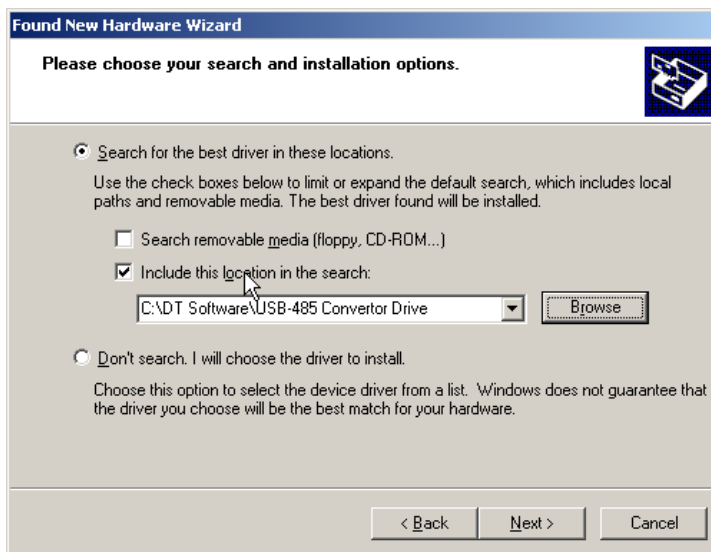
3.2.4. Select 'Include this location in the search', then click Browse button.



3.2.5. Select the 'USB-485 Converter Drive' of DT-CONFIG software install path, then click OK button.



3.2.6. After the browse operation, click Next button.



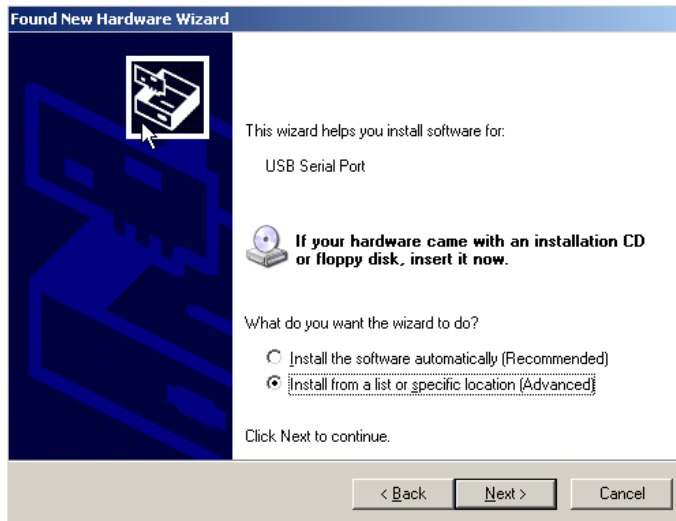
3.2.7. Windows will indicate the Wizard has been completed, then click Finish button.



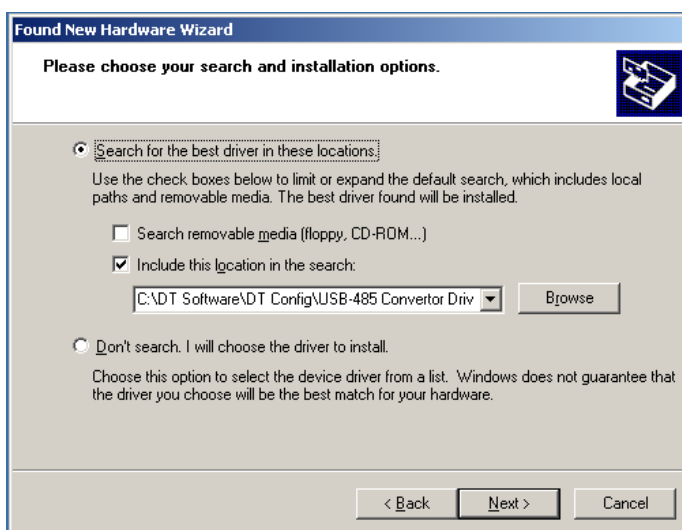
After 4.2.1 to 4.2.7 operation, you have installed the **USB Serial Converts**.

In the next steps, you will install **USB Serial Port**, similar with previous.

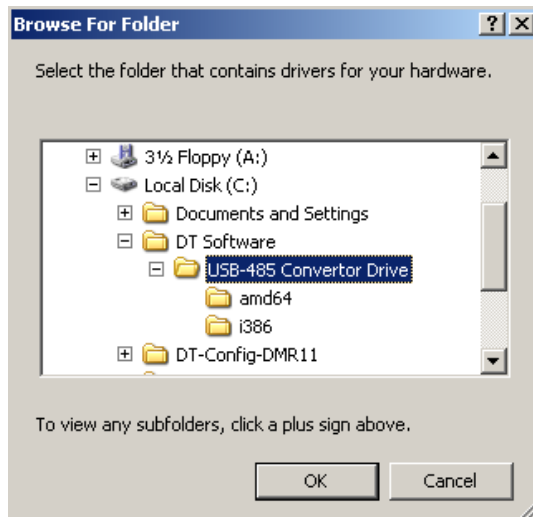
- 3.2.8. Wait a few seconds, Windows will show a new USB Serial Port is found, select and operate as previous steps. Firstly, Select 'Install from a list or specific location (Advanced)', then click Next button.



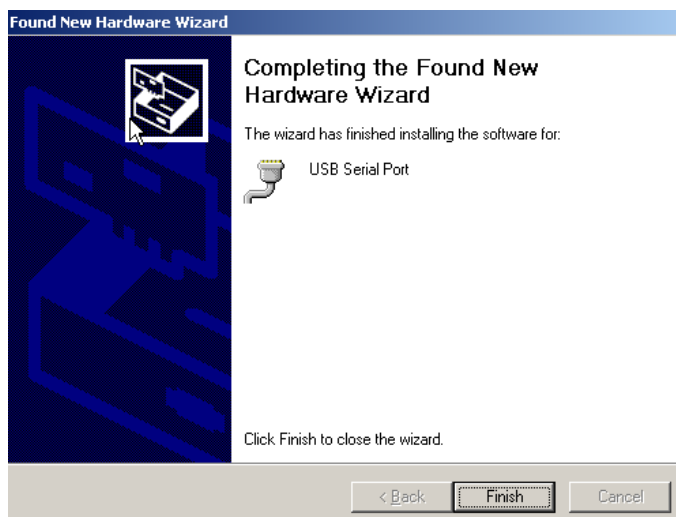
- 3.2.9. Select 'Include this location in the search', then click Browse button.



3.2.10. Select the 'USB-485 Convertor Drive' of DT-CONFIG software install path, then click OK button.



3.2.11. After the browse operation, click Next button.



After 4.2.8 to 4.2.11 operation, you have installed the **USB Serial Port**.
By now, the USB converter related drivers have been installed.